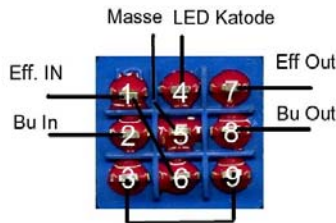
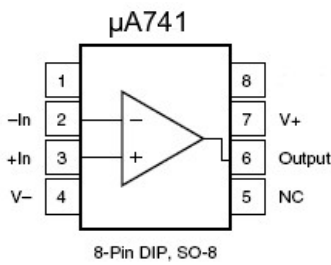


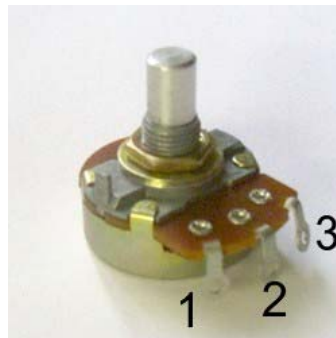
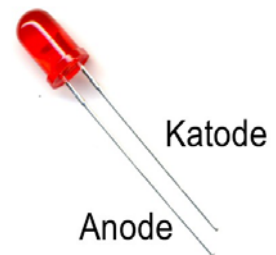
Assembly manual for Kit Microamp ®

page 2.....Bill of material
 page 3.....Soldering the PCB
 page 4.....Wirng diagram
 page 5.....Placing the ext. components

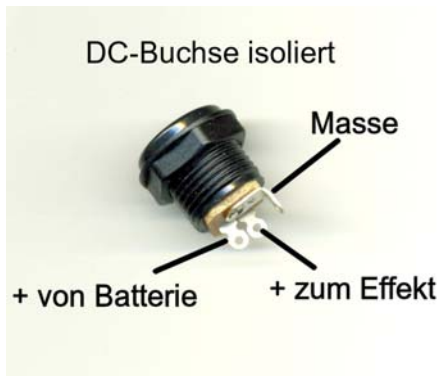
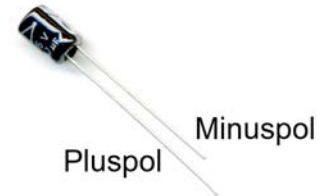
Some connections of important components



Leuchtdiode (LED)

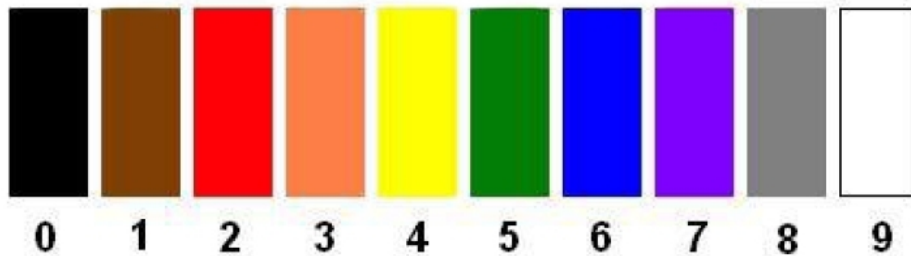


Elektrolytkondensator



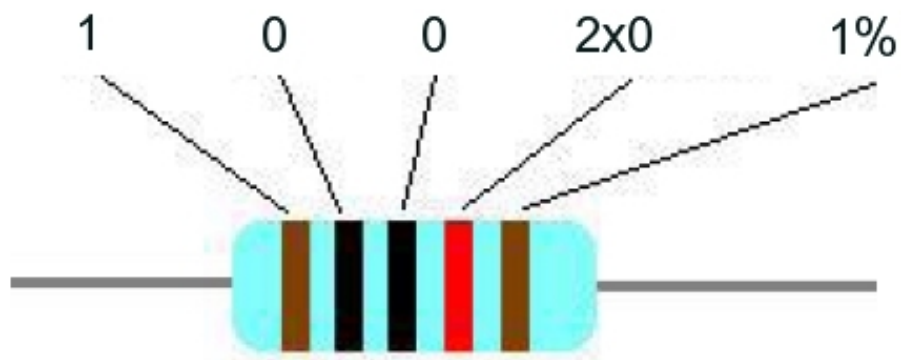
Color table for resistors MF207 FTE52 1% and a example

Resistor color code

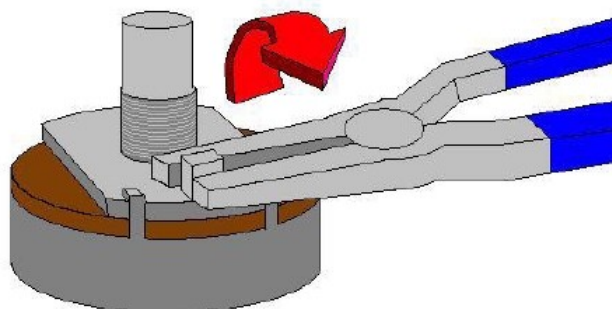


Example: Resistor MF207 10K 1%

Value: 10000 Ohm = 10KOhm



Breaking nose at the potentiometer
Nase am Poti mit einer Flachzange abbrechen

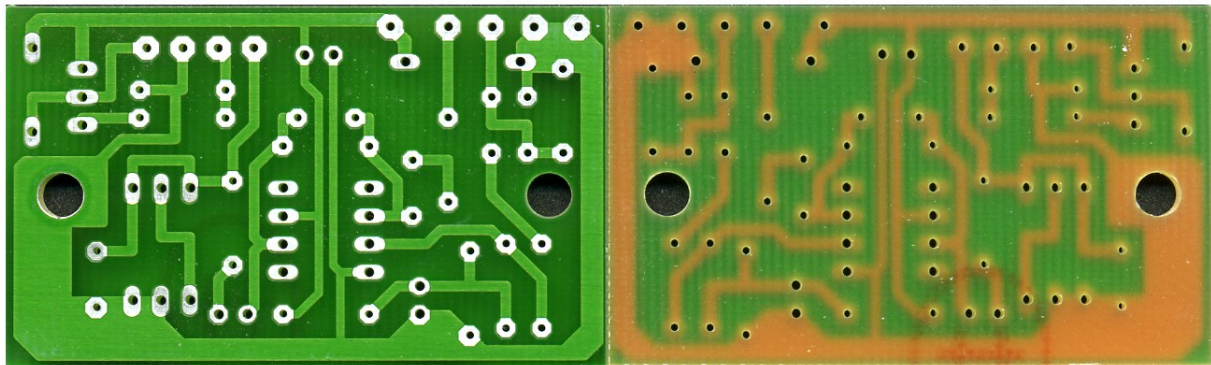


Materialliste / bill of material

Quantity	Label
1	Mono Jack ¼"
1	Stereo Jack ¼"
1	3PDT switch
1	LED bezel
1	LED red 3mm Low Current
1	Pot 500K C (reverse logarithmic)
2	Self adhesive spacer 12,7mm
1	DC-jack isolated
1	µA741, TL071 or other DIP8
1	IC-socket LC 08
1	Resistor 470R (yellow/violet/black/black/brown)
2	Resistor 10M (brown/black/black/green/brown)
2	Resistor 100K (brown/black/black/orange/brown)
1	Resistor 1K (brown/black/black/brown/brown)
1	Resistor 2K2 (red/red/black/brown/brown)
1	Resistor 2K7 (red/violet/black/brown/brown)
1	Resistor 10K (brown/black/black/red/brown)
1	Resistor 56K (green/blue/black/red/brown)
1	Diode 1N40xx (e.g.z.B. 1N4001, 4002)
1	Foil MKT 100nF (0.1µF)
1	Ceramic cap SDPN 51pF (51)
1	Electrolytic RASM 4,7µF
1	Electrolytic RASM 100µF
1	Electrolytic RASM 47µF
1	Electrolytic RASM 10µF
1	Battery clip
1	Some wires
1	PCB
2	Cabel fastener

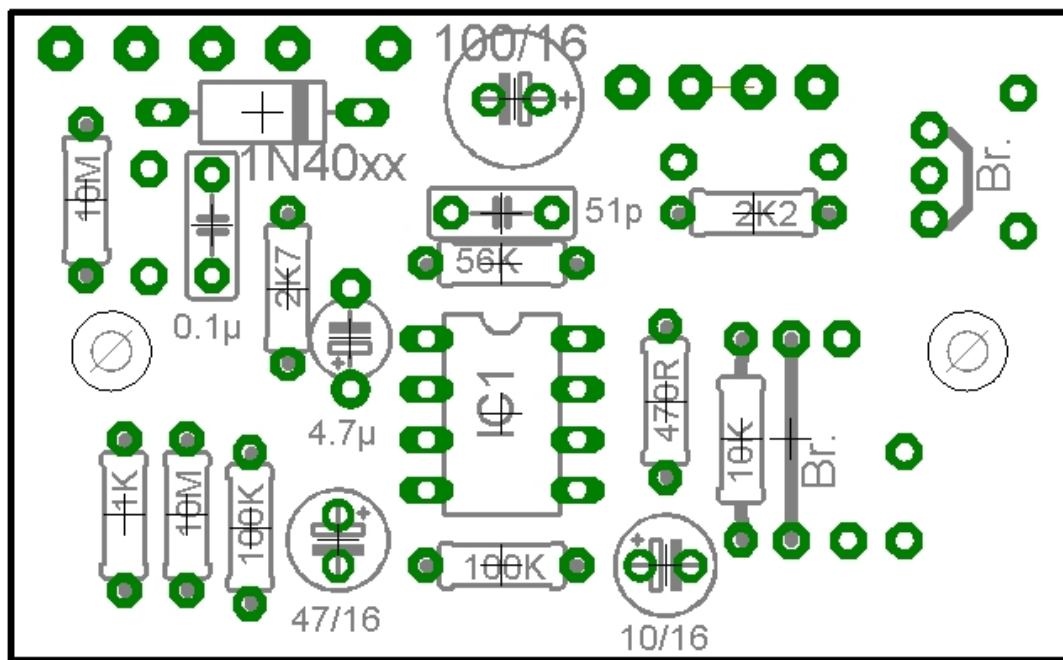
Solder is not a component of the kit!

Picture of the PCB Bottom/ Top



Soldering the PCB

As the first the printed circuit board is equipped on the basis the bill of material illustrated down. For this one should begin the diodes, the capacitors with the lowest elements equip, i.e. as the first resistors, and in the end the transistors. Some elements are not equipped, since the printed circuit board is used also for other projects. Clean work, in particular the execution of the soldered connections should possess highest priority, in order to from the beginning generally exclude assembly and soldering errors.



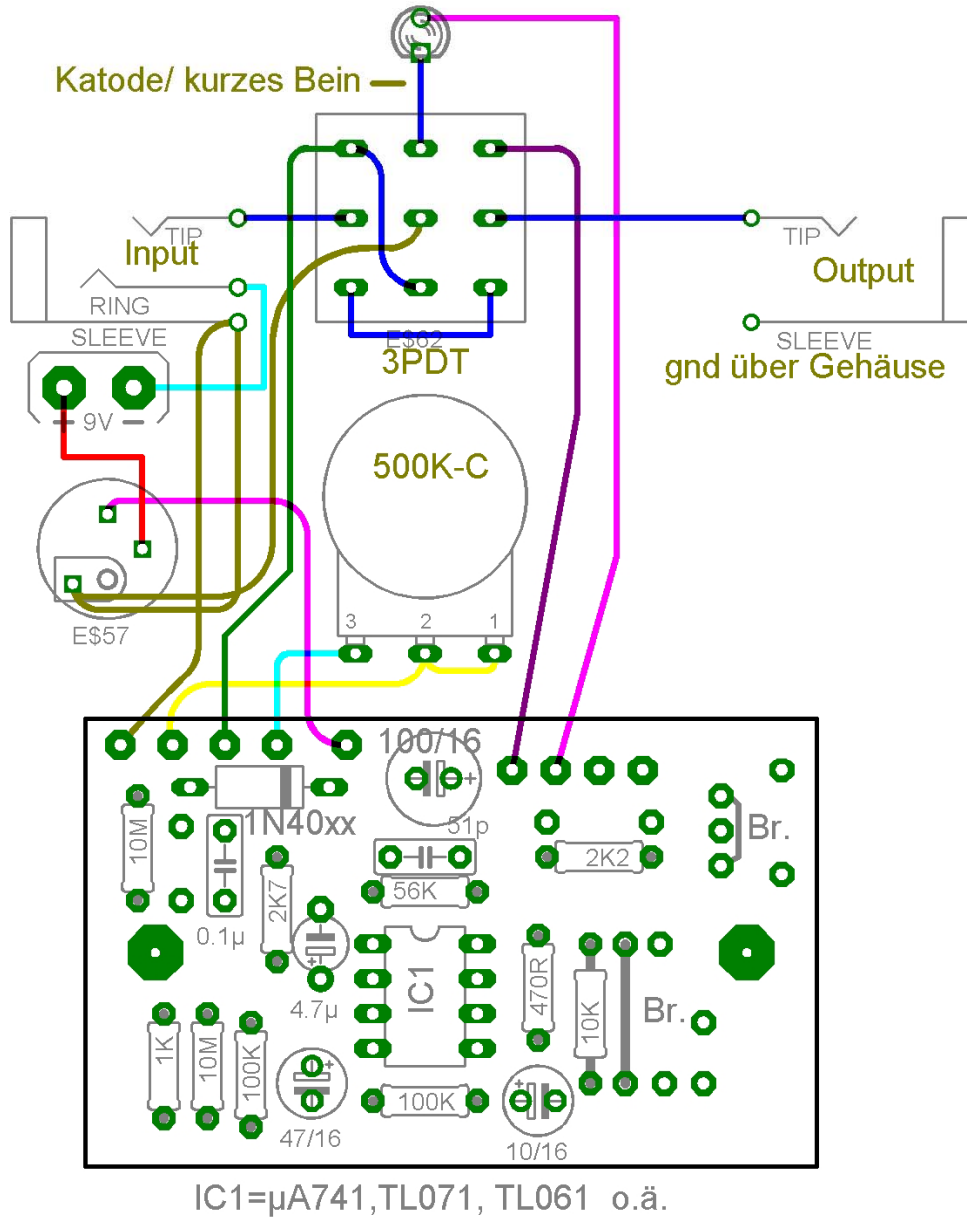
IC1= μ A741, TL071, TL061 o.ä.

After the PCB is completely soldered, takes place the wiring after the wiring diagram (shown down). Before however the pre-drilled housing should already be equipped with all passive components (switches, audio jacks, potentiometers and the led). The LED cathode is soldered directly to the switch. The anode is cutting and soldered with a wire to the pcb.

Wiring diagram

Mikroamp

(c) UK-electronic 2007



The attachment of the PCB in the enclosure is made by means of the self adhesive spacers provided crosswise by the enclosure. In addition it is possibly necessarily to be shortened the spacers on one side each something.

2007 © UK-electronic

Dimension for drill:

Potentiometer : 7mm

Audio jacks : 9.3mm

3PDT-switch: 12mm

DC-jack: 12mm

LED bezel for 3mm LED: 6mm

As enclosure use 1590B, 1550B or Eddystone 27134PSLA, or other

2007 © UK-electronic

□

